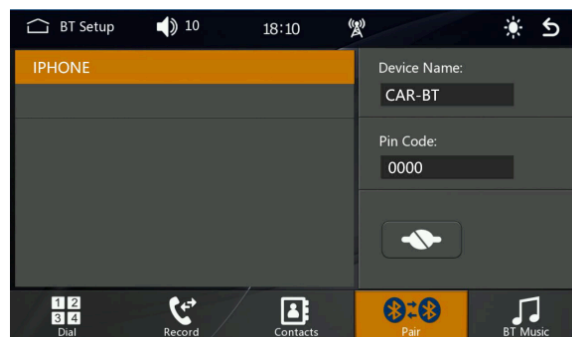


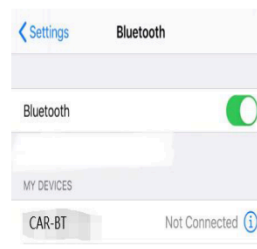
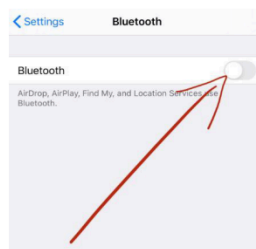
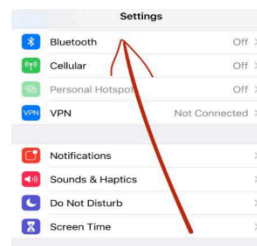
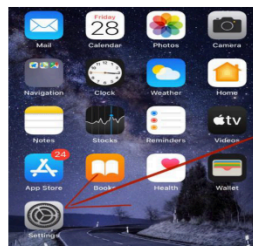
W519 9-Inch Wireless CarPlay & Android Auto Screen with GPS Navigation



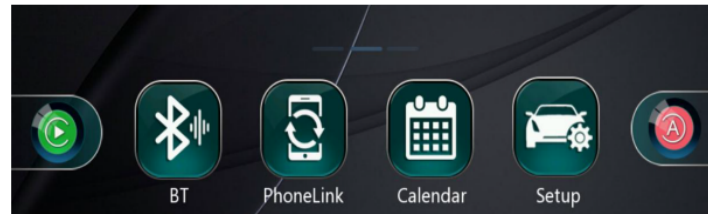
BT Connection



1. Tap BT View Device name
2. Mobile phone search device Bluetooth name, connect bluetooth will pop up the relative matching code, click match connection



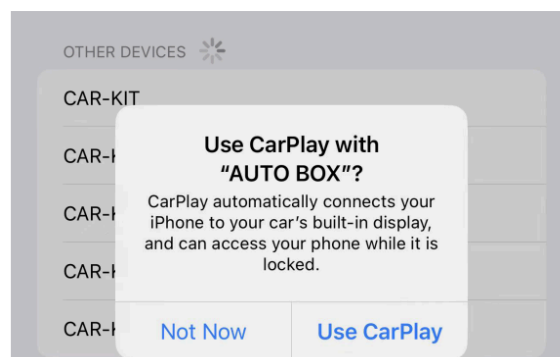
Apple CarPlay



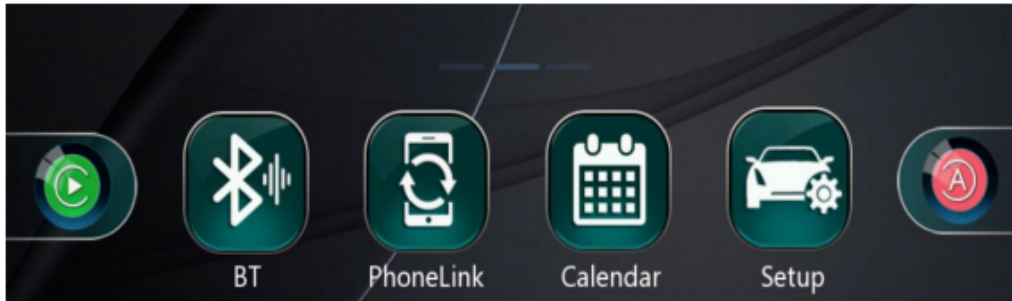
Click the PHONE LINK function

iPhone: Auto Connect: CarPlay

Bluetooth mobile PHONE will pop up to turn on Wi-Fi and use a CarPlay car.



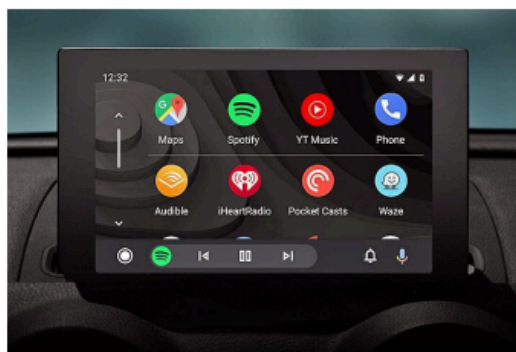
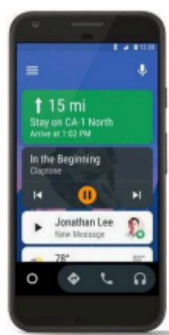
Android Auto



Click the PHONE LINK function android: Auto Connect: Auto

This feature is not supported in all countries, and "Google Play" services need to be available locally.

1. Need to download and install "Android auto" software in "Google Play".
2. A mobile phone with Android 11.0 or higher must be used.
3. Open the "Android auto" software on the phone.
4. After the connection is successful. You can use the functions provided by Android auto on the car.



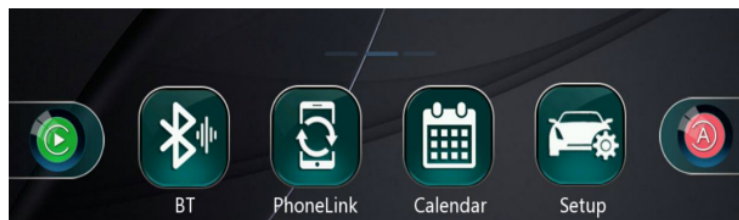
Phone Link



You can't control your smartphone here.

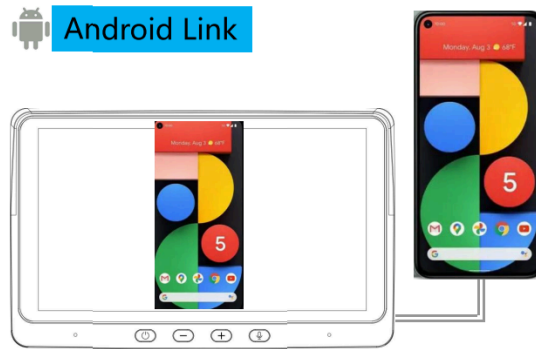
When the device is plugged into the iPhone, the content of the phone screen will be projected onto the car screen.

1. Connect the USB data cable to the phone.
2. Click Trust in the popup window of the mobile phone.
3. Enter the phone screen lock password.



Click the PHONE LINK function iPhone: Auto Connect: Mirror

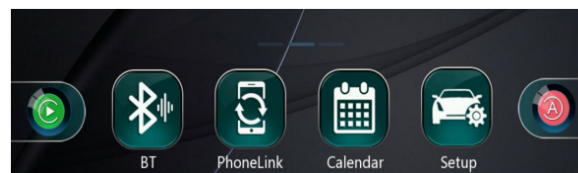




When using an Android device, after connecting the USB data cable, you will be prompted to install the APP software. After installation, Plug the data cable again, it will enter the screen mirroring mode. And it can be operated on both the player screen and the phone screen.



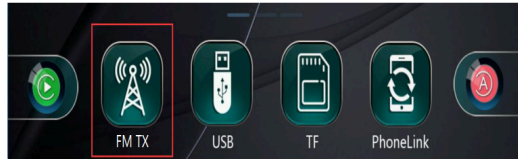
Manage from the APP!



Click the PHONE LINK function Android: Auto Connect: Mirror



Sound transmission to car horn



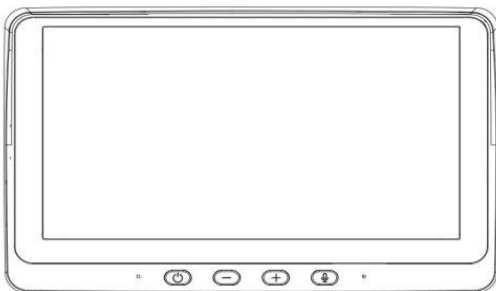
This unit has a built-in speaker, but if you want louder sound, you can transfer it to your car's speakers.



1. Click the FM transmitting function and turn on the switch.

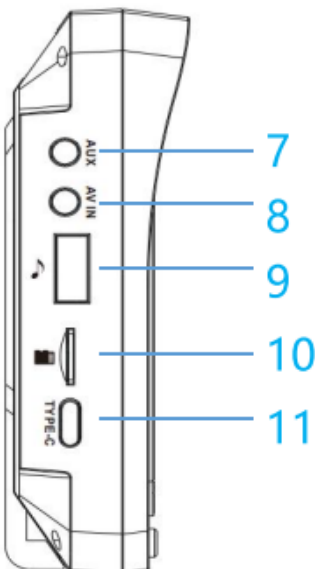
2. By FM radio transmitter - set the same FM radio channel on the unit and your car's radio. (please avoid using the channel to be occupied by the FM station)

3. By AUX cable - plug the aux cable into the unit audio port and your car's original aux port if your car has.



- 1.6.
2. Power button
3. -
4. +
5. Siri wake up (CarPlay)

1 2 3 4 5 6



7. Audio interface
8. AVIN interface
9. USB
10. TF card socket
11. Power cable

Common problem

The FM transmitter has poor signal and noise interference.

- If the FM transmission signal is poor, you need to fix the car radio and plug in the antenna, and organize the wiring harness to avoid interference in the frequency band.

Wireless Carplay often disconnects or doesn't work.

- When connecting to Carplay, do not connect the phone to other wireless networks to avoid Carplay disconnection.

The bracket is not strong, the suction cup adhesion is not enough, and the adhesion is unstable under high temperature.

- When sticking, pay attention to keep the sticky position clean and dry to avoid the occurrence of bubbles and unstable stickiness when sticking.

The Bluetooth is out of sync, the caller can't hear the sound or there is noise.

- Make sure that the mic position is not blocked by foreign objects.