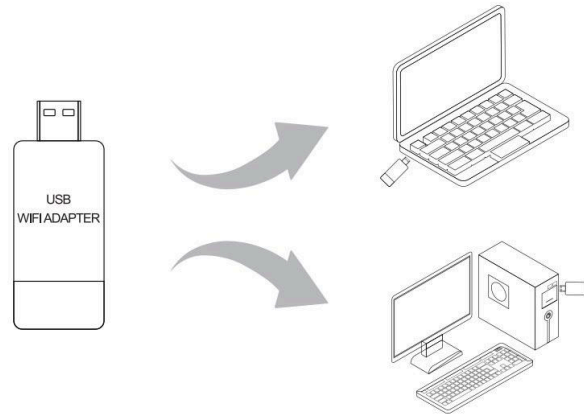


**RE-1202 USB 3.0 Dual-Band WiFi
Adapter with 2.4G & 5G Network Card -
1200Mbps**



Installation

No need to power off the computer, just plug the WiFi adapter into the corresponding port.



Keep away from heat source, keep ventilated, this equipment's operating temperature is 0~40 degrees.

Please note waterproofing during storage, transportation, and operation.

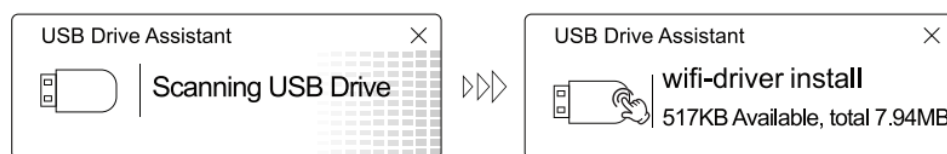
Do not disassemble on your own. In case of a fault, a professional repair person is needed.

Software installation

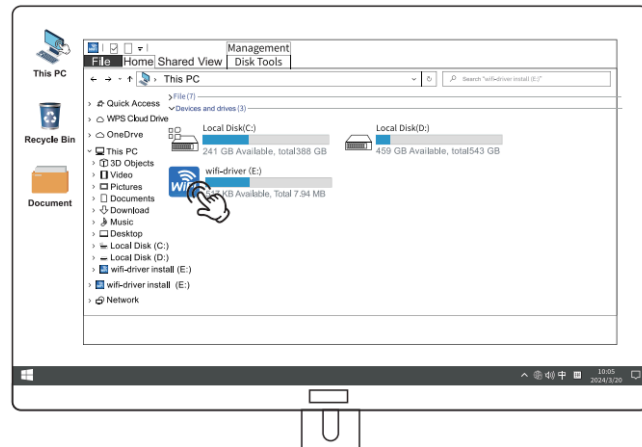
After the wifi adapter is inserted into the computer, it can be opened in the following two ways.

(The software installation process for Windows 7/8/10/11 is similar. The following uses Windows 10 as an example.)

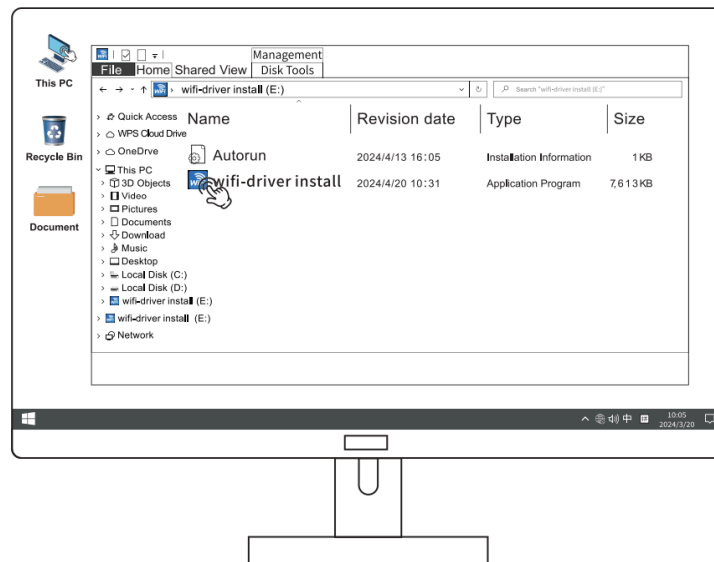
1. After inserting the wifi adapter, if there is a USB drive assistant installed, click on the displayed USB drive assistant to open the dialog box for installation, as shown in the following image:



2. Double-click on the desktop "This PC" or "My Computer", double-click the drive to wait for 10-30 seconds, and then you can start the installation.

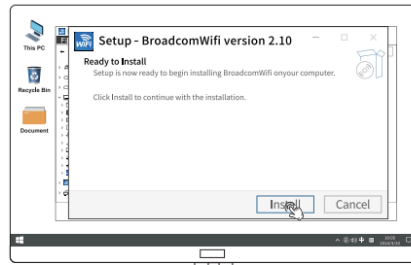


3. After inserting the WiFi adapter, some computers will automatically eject the driver.

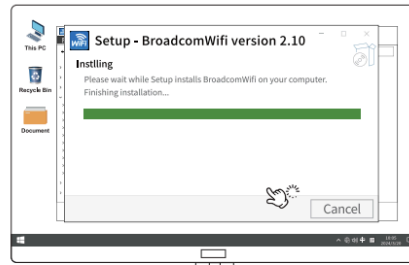


Tips: If your computer cannot recognize the driver, please uninstall another installed driver or WiFi adapter from the Control Panel, and then reinsert the wifi adapter to begin installation.

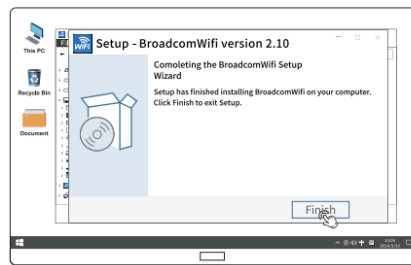
Installation steps



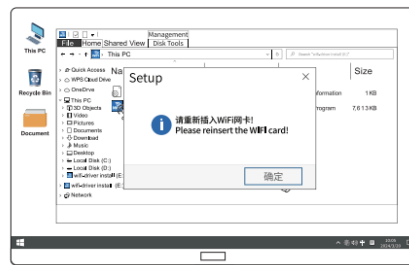
①



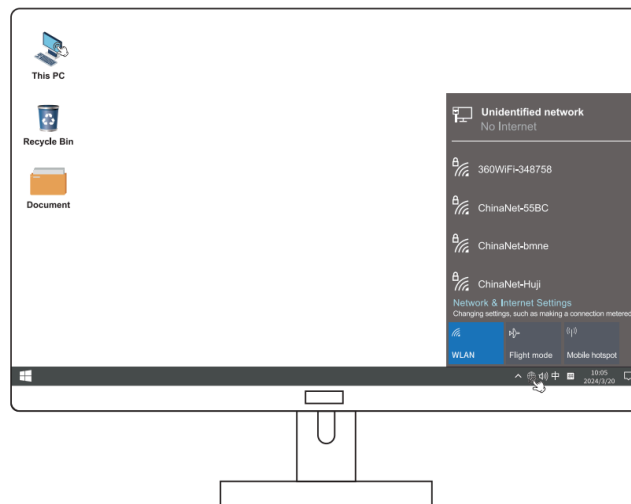
②



③



④



⑤