

User manual for QCY T1C In-Ear True Wireless Stereo Headphones



Specifications

- Bluetooth version: 5.0
- Bluetooth range: 10m
- Speaker diameter: 6mm
- Impedance: 16Ohm
- Playback time: 16h
- Earpiece battery capacity: 43mAh
- Earpiece charging time: 1.5h
- Charging case battery capacity: 380mAh
- Charging case charging time: 2h
- Charging case interface: MicroUSB
- Earpiece weight: 4.6g
- Charging case weight: 27.9g
- Charging case dimensions: 78 x 34 x 28 mm

How to pair the earphones

When pairing the earphones for the first time follow the next steps:

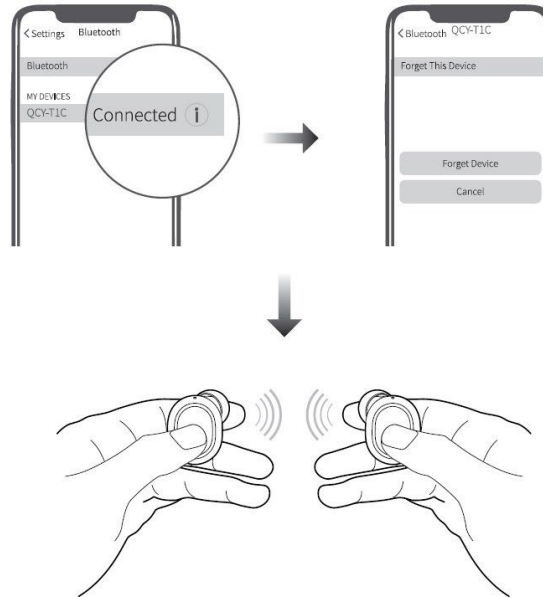
1. Pick up both earphones and pop them back into the charging case to activate them
 2. Pick them up again
 3. Power the Bluetooth on your device and search for QCY-T1C and pair them
- *Once paired earphones will automatically power on upon picking up from the charging case. If they fail to power on, try charging them, and then try again.

To switch the paired devices follow the next steps:

1. Turn off the Bluetooth on the first device and the earphones will automatically disconnect and enter into the pairing mode
 2. Turn on the Bluetooth on the second device, search for QCY-T1C and pair them.
- *Multi-point connection is not available on these earphones. They will automatically connect to the second device when you power them up again.

You can also delete all pairing records and factory reset the earphones. To do so, please follow the next steps:

1. Delete the connectivity records of the earphones on your device
 2. Earphones are powered off and out of the case, hold the multifunctional button for 10s or until the LEDs blink red and blue 3 times to power on
- *After the factory reset, you have to pair the earphones with your device like it's the first time pairing.



How to wear the earphones

1. Rotate the earbud and pop it into your ear, then shake your head to check the wearing stability
2. Adjust the microphone towards your mouth so that your caller can hear you better

