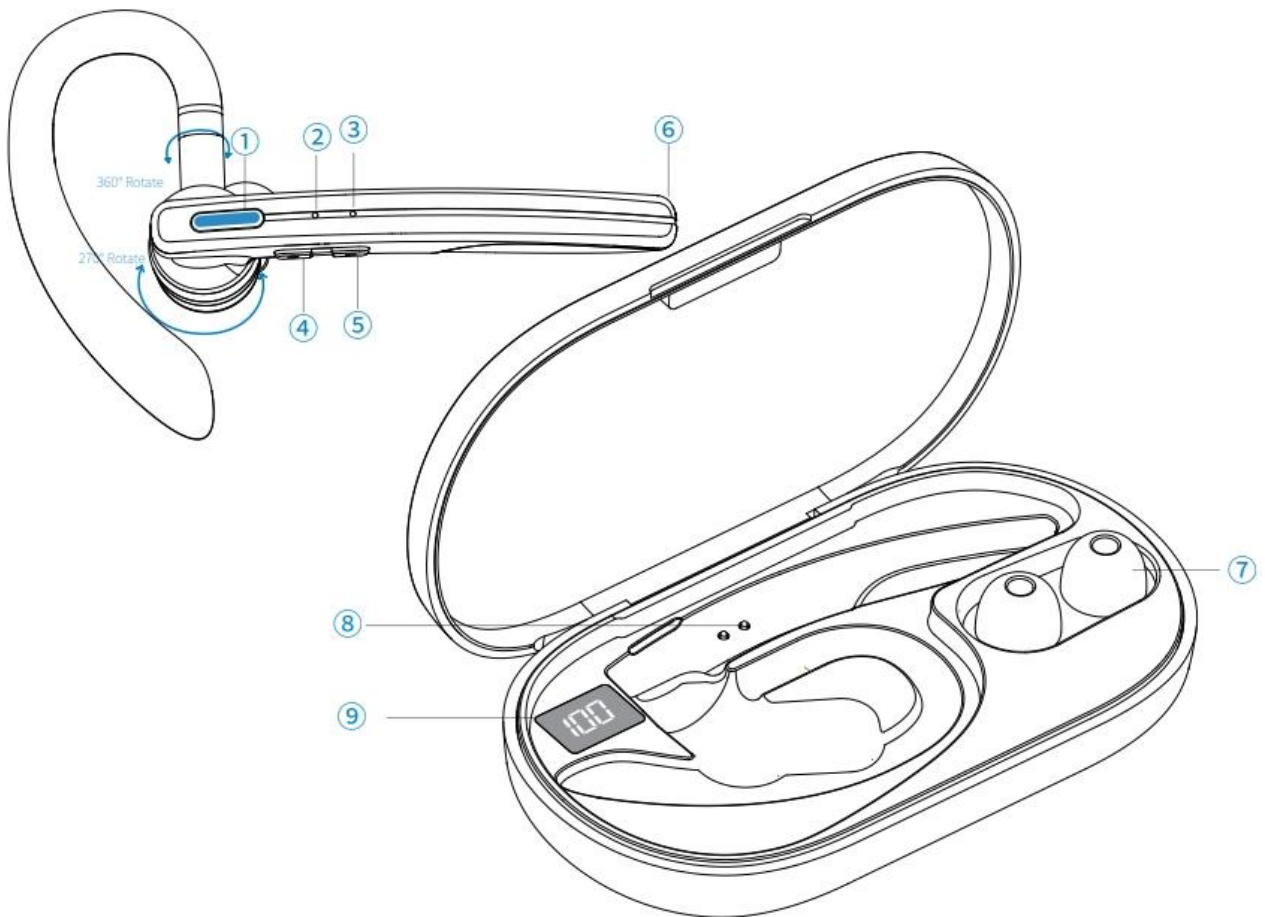


User Manual for HiFi Bluetooth Headset with Charging Case K29



Specifications

- Model: K29
- Bluetooth version: 5.0
- Transmission distance: up to 10 meters
- Earphone battery capacity: 90mAh
- Charging case capacity: 500mAh
- Talking time: up to 9 hours
- Playback time: up to 10 hours
- Earphone charging time: up to 2h
- Power display: LED digital display
- Standby time: up to 40h
- Water-resistant level: IPX3
- Headset weight: 14g

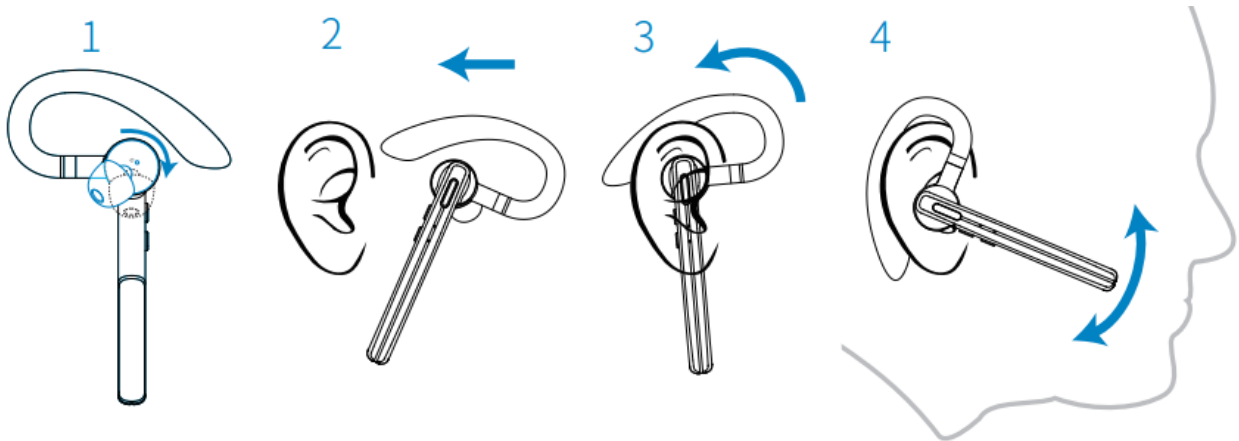


1. Multifunction button
2. Indicator
3. Vice microphone
4. Volume up
5. Volume down

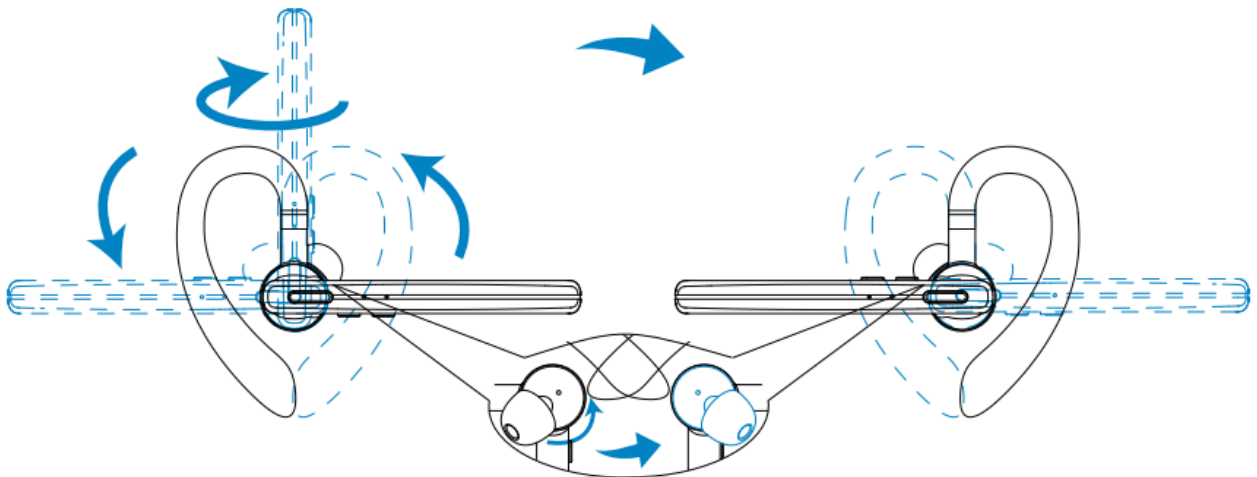
6. Main microphone
7. Spare ear tips
8. Charging pins
9. Battery status display

How to wear the headset

1. Choose the ear tip that fits your ear the best
2. Rotate the speaker to the left side (wear it on the right ear)
3. Slide headset over and behind your ear, then press gently towards your ear
4. Rotate boom until the main microphone is pointed towards your mouth



If you want to wear the headset on your left ear, rotate the speaker to the right side, swing the boom upwards then twist it around so the ear tip is on the other side before lowering the mic boom.



Pairing and connect

First of all, make sure that the headset and the charging case are fully charged before the first use. The headset will automatically power on when you take it out of the charging case and power off when you put it back in the charging case. If you want to power the headset on or off manually, press and hold the multifunction button for 3 seconds to power it on, and for 4 seconds to power it off.

To pair the headset with your smartphone, pick it up and wait for 3-5 seconds. The indicator will slowly flash which means that it's ready to pair with your device. Activate the Bluetooth on your smartphone, search and select the model K29 to pair with the headset.

Button control

For music:

- Play/Pause: Press the Multifunction button once
- Volume Up/Down: Press and hold the Volume Up or Volume Down button
- Next/Previous song: Press Volume Up or Volume Down twice

For calls:

- Answer/End call: Press the Multifunctional button once
- Reject call: Hold the Multifunctional button for 2 seconds
- Last number dial: Press the Multifunctional button twice

To activate the Voice Assistant press the Multifunctional button three times. If you want to reset the headset hold the Multifunctional button and Volume Down button simultaneously for 1 second.