

Drone with HD Dual Camera and Remote Control AE11

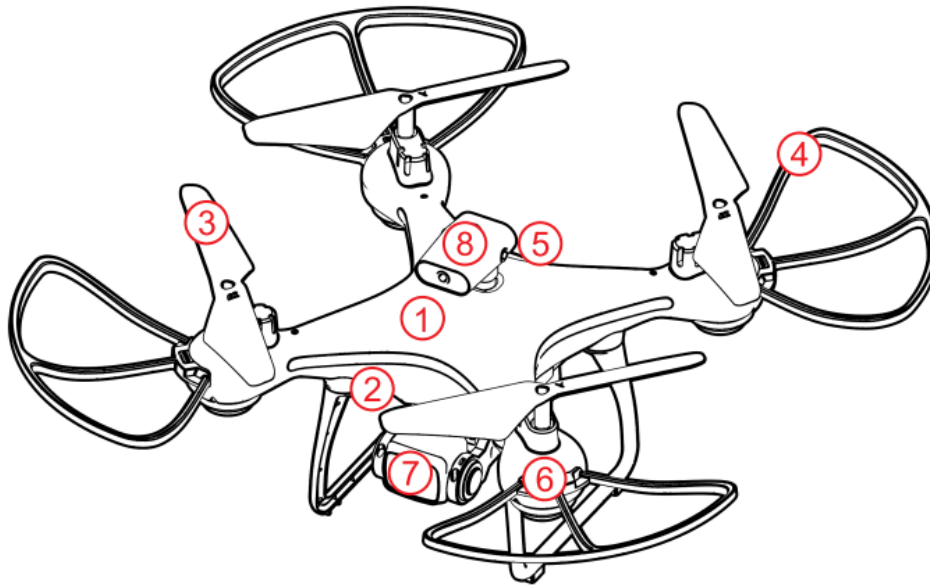


Specifications:

- Material: ABS plastic + electronic components
- Gyroscope: 4 axes
- Frequency: 2.4G
- Channel: 4CH
- Motor: 716 brushed cordless motor
- Battery: 3.7V 2500mAh lithium battery (included)
- Transmitter Power: 3 x AA batteries (not included)
- Launch Mode: Mode 2 (left-hand throttle)
- Flight time: about 20 minutes
- Gear: slow/medium/fast
- Maximum travel speed: 10Km/h
- Maximum ascending speed: 3Km/h
- Charging time: 60 minutes
- Remote control distance: 300m
- FPV distance: 50m
- FPV: wireless network
- Camera: 720P
- ESC Camera: Remote ESC 90°
- Aircraft size: 29 x 29 x 12cm (expanded size)

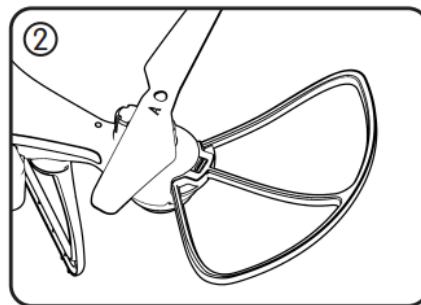
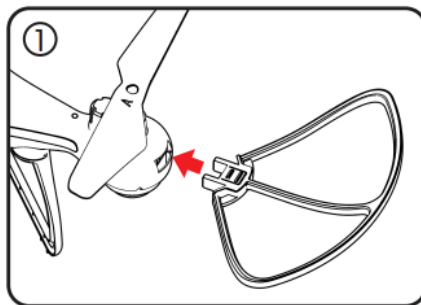
Product overview:

1. Upper casing
2. Lower casing
3. Propeller
4. Protective frame
5. Battery
6. Motor
7. Camera
8. Obstacle avoidance equipment



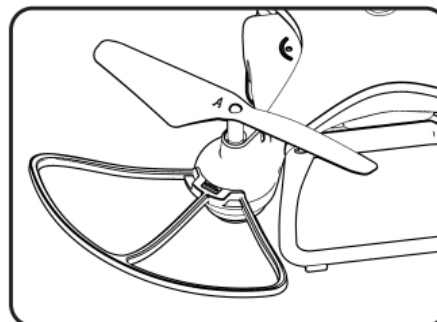
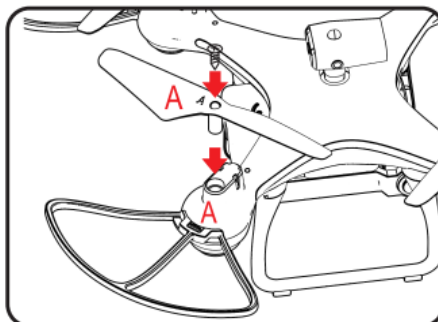
Assembling protective guard:

- Align the protective frame with the arm and install it, and press it until it is in place.



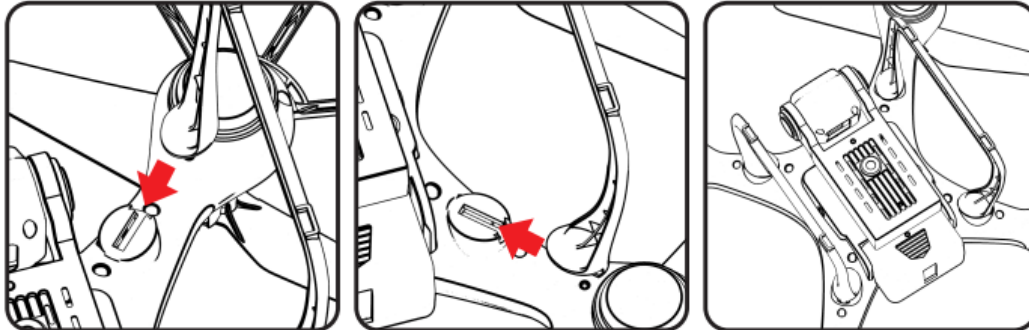
Assembling propellers:

- Align the blades with the motor shaft and install them (the arm identification must be consistent with the blade identification), and tighten the screw clockwise.



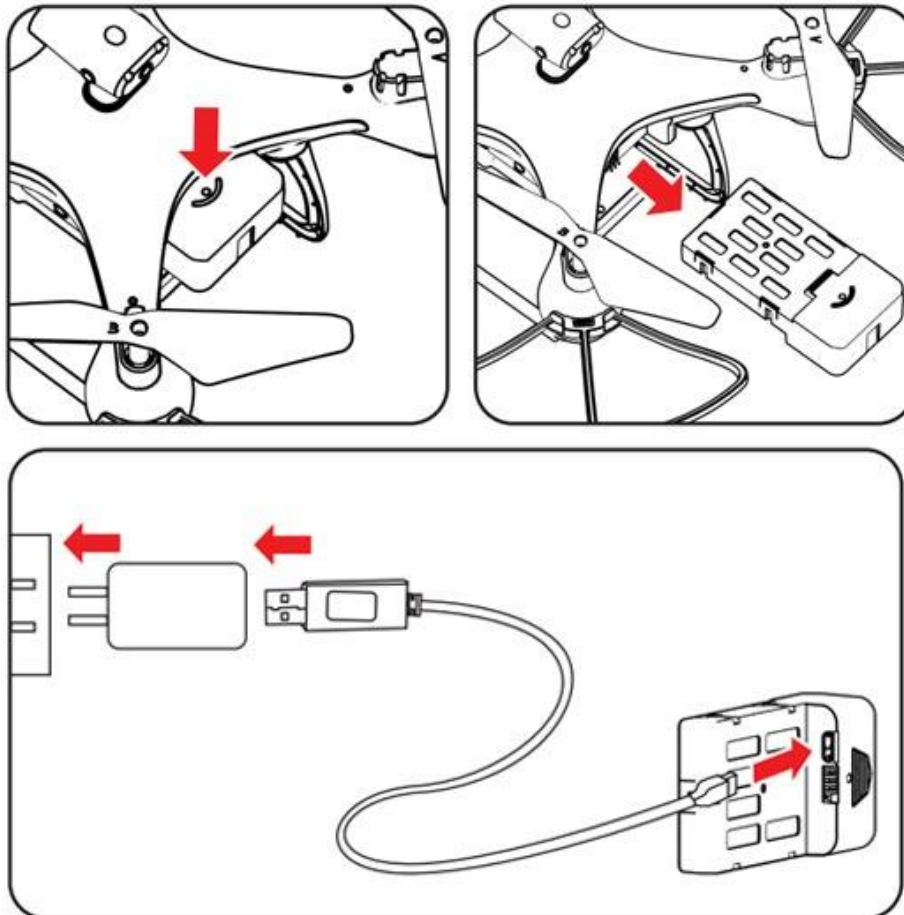
Tripod installation:

- Align the tripod with the slot on the bottom case of the drone, and then install the tripod on the other side.



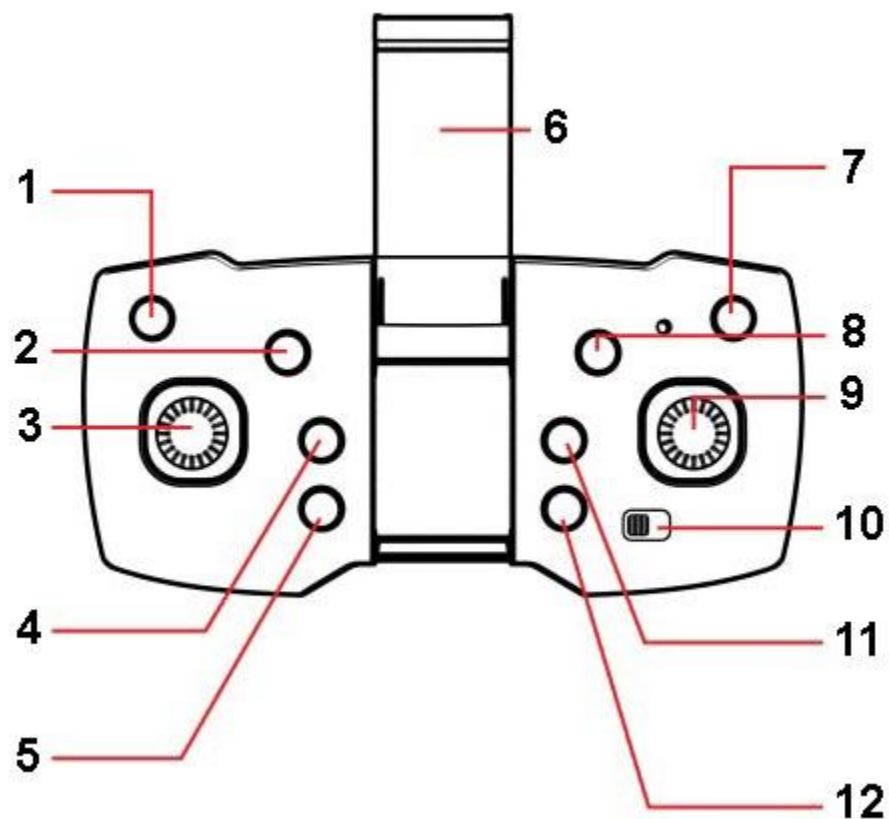
Battery charging:

- Remove the lithium battery from the bottom of the drone, then connect the USB charging cable to the battery and the USB power port.



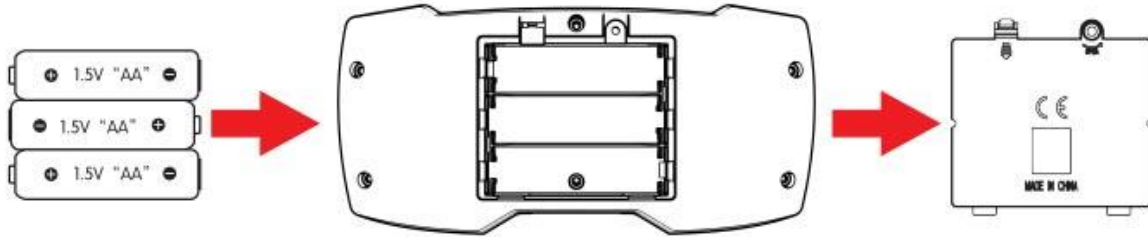
Remote control overview:

1. Obstacle avoidance mode button
2. Camera up
3. Left joystick
4. Camera down
5. One-key take off/landing
6. Phone holder
7. One-key flips&rolls 360
8. High/low speed
9. Right joystick
10. Power switch
11. Short press headless mode
12. Fine-tuning key



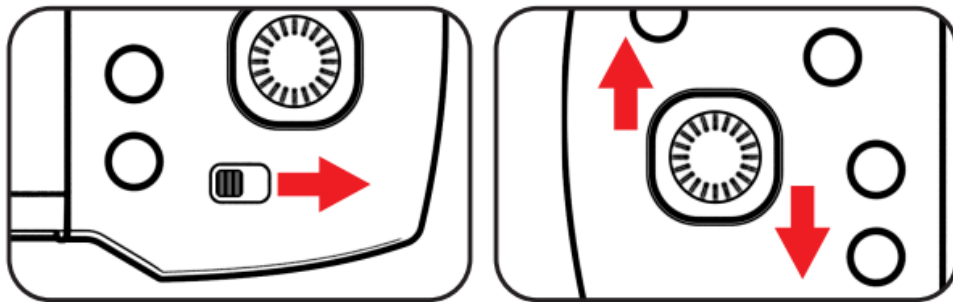
Remote control battery installation:

- Open the remote control battery cover and insert the three AA batteries correctly according to the electrode instructions.



Signal connection of transmitter and receiver:

1. Switch on the drone power, place the drone on a horizontal plane, then open the remote control, both of their lights flash quickly at the same time.
2. Push the throttle joystick to the top, hear a "drip", and the remote light flashes quickly. Then pull the joystick to the lowest point, and hear a "drip", the lights of the remote and drone change to steady on, which means the calibration is finished.



Transmitter calibration:

- Apply transmitter calibration when the drone fails to take off vertically. Move two joysticks to the lower left (or lower right) at the same time, then it will sound like a "drip", meanwhile, the drone lights flash quickly. Until the lights become steady, the calibration is finished. When executing the correction command, it must be executed in a stable state parallel to the horizontal line, otherwise, the correction effect will be affected.

